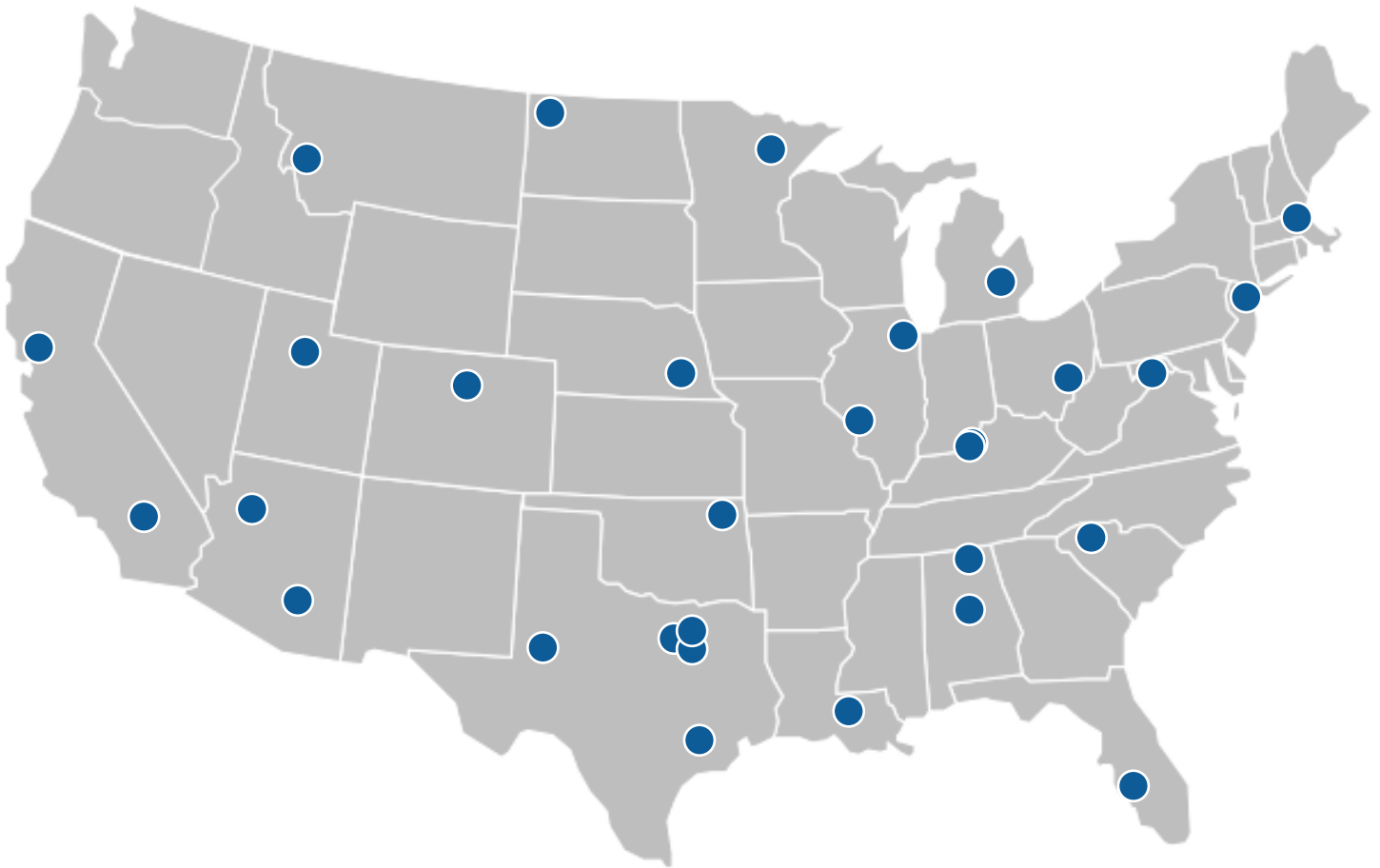




# NATURAL GAS DISTRIBUTION TOOL CATALOG

Q4 2022 v1

**Need tooling and equipment?  
We've got you covered across the country.**



---

**ISCO Industries, Inc. Headquarters**  
100 Witherspoon Street | Louisville, KY 40202  
**Questions?** Call 800-345-ISCO (4726)  
[www.isco-pipe.com](http://www.isco-pipe.com)

**4**

Electrofusion Processors

**9**

Clamps

**14**

Peelers

**19**

Pipe Cutting Tools

**21**

Service Line Tapping & Testing

**32**

Squeeze-Off Tools

**39**

Line Stopping

**42**

Hot Tapping

**45**

Pipe Trailers

# Electrofusio Processors



## Highland VORTEX Processor

Introducing VORTEX from Highland, a small processor with big power. VORTEX features an active cooling system which has allowed us to decrease the overall size and weight of the unit. The powerful fan keeps the processor cool while a positive pressure configuration helps keep out dust and debris. VORTEX comes standard with GPS and is ready to meet your ASTM F2897 needs.

### Details:

- Fuse up to 16" fittings
- Fuse 4.0mm or 4.7mm fitting terminals with universal fusion tips
- Wireless and rechargeable barcode scanner
- Active cooling for maximum performance
- Light and compact at 35 pounds and 18"x14"x7"
- Rugged case for protection and storage
- Calibration Interval - 12 to 36 months. Unless requested when purchasing, the 24-month interval is set as default.
- Calibration Lockout option - Once the calibration date of the unit has passed, the unit will not allow for any fusions to be performed until calibrated. This option can be selected when purchasing or enabled by contacting us.

## HIGHLAND

### Highland Supercell Processor

Introducing Supercell from Highland, a generational leap in electrofusion technology. Supercell is a lithium-ion battery powered processor designed to work all day, every day. With industry leading capacity, the average operator can get up to two weeks of work on a single charge. Supercell comes standard with GPS, is ASTM F2897 traceability compliant, and equipped for use with mobile applications.

#### Details:

- Fuse 4.0mm or 4.7mm fitting terminals with universal fusion tips.
- Reliably fuse up to 200 1" IPS couplings on a single charge. Supercell will also handle up to 12" IPS couplings.
- 98% reduction in carbon emissions versus traditional generator powered fusion. 0db operation also reduces noise pollution by 100% all in a 32 lb. package.
- When using the included faster charger, Supercell recharges from flat to full in 60 minutes. Achieve enough energy to fuse a 4" coupling in just 25 minutes.
- Wireless and rechargeable barcode scanner included.
- Comes in a rugged case for protection and storage.
- Calibration Interval – 12 to 24 months. Unless requested when purchasing, the 24-month interval is set as default.
- Calibration Lockout option – Once the calibration date of the unit has passed, the unit will not allow for any fusions to be performed until calibrated. This option can be selected when purchasing or enabled by contacting us.
- 2-year warranty
- Battery pack life expectancy is a minimum of five years.



#### Fusion Capacity:

| Fitting Size and Type | Number of Fusions on Full Charge* |
|-----------------------|-----------------------------------|
| 1/2" Coupling         | 200+                              |
| 1" Coupling           | 200                               |
| 2" Coupling           | 40                                |
| 2" Tap Tee            | 68                                |
| 4" Coupling           | 8                                 |
| 4" Tap Tee            | 28                                |
| 6" Coupling           | 4                                 |
| 6" Tap Tee            | 28                                |
| 8" Coupling           | 3                                 |
| 8" Tap Tee            | 26                                |
| 12" Coupling          | 1                                 |
| 12" Tap Tee           | 12                                |

\*Results may vary. Tested using MTD Trifusion Fittings

# MTD



## MTD Battery Fuse Processor

- Compliant with ASTM F2897 traceability standards
- Fuse any fitting up to 6"
- Storage for 11,000+ fusion records. Downloads via Bluetooth and mobile app
- Standard-equipped with GPS
- Perform your own calibration with the AutoCal calibration machine

## Fuses per Charge

- 30ea. 1¼" ~ 12" Tapping Tees
- 30ea. 2" ~12" Branch Saddles
- 90ea. 1" or smaller Coupling-Interface Fittings<sup>2</sup>
- 18ea. 2" Coupling-Interface Fittings
- 4ea. 3" Coupling-Interface Fittings
- 2ea. 4" or 6" Coupling-Interface Fittings

<sup>1</sup>Quantities based on MTD TRI FUSION fittings and may vary by fitting manufacturer.  
<sup>2</sup>Coupling-Interface Fittings include couplings, elbows, tees, end-caps, and reducers.

## MTD Minimaxx Processor

- Compliant with ASTM F2897 traceability standards
- Storage for 11,000+ fusion records. Downloads via Bluetooth and mobile app
- Standard-equipped with GPS
- Perform your own calibration with the AutoCal calibration machine

### Details:

- Fuse 4.0mm or 4.7mm fitting terminals with included adapters and 20' output cables (universal tips available)
- AutoScan Optical Laser Scanners for easier barcode scanning
- Operation manual, lead tool, and terminal adapters
- Rugged Pelican case for protection and storage.



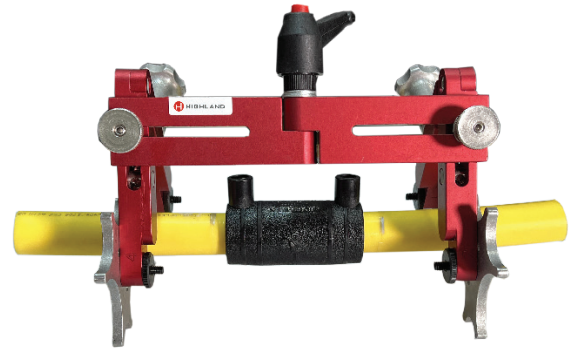
# Electrofusision Clamps



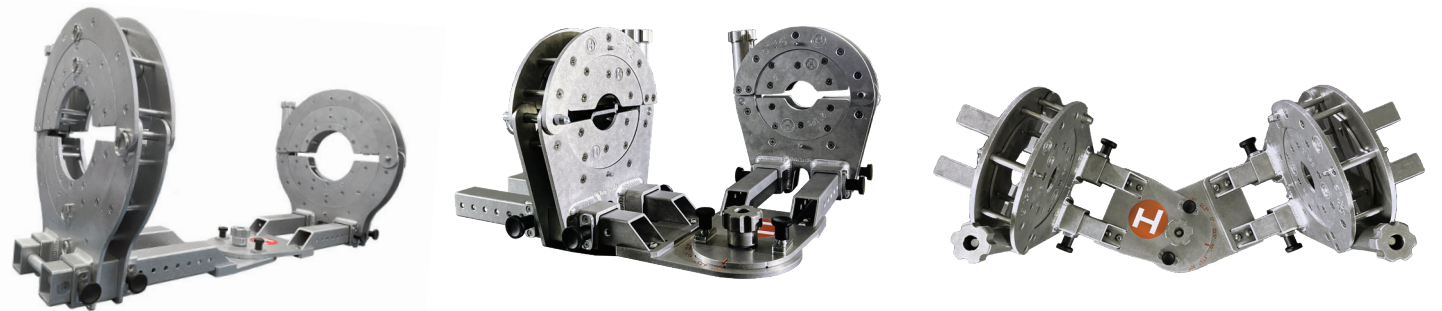


## Highland VariClamp

The Highland VariClamp has been designed to hold and align pipe from 1/2" - 2" IPS/CTS/MM or in any combination, helping the pipes' alignment and preventing movement during the fusion. This clamp has rotatable profiles having up to seven different sizes on them that allow quick selection of the pipe diameter for both couplers and reducers. It also bends to pivot 45° or 90° to allow elbows to be held.



| Part No. | Size Range      |
|----------|-----------------|
| 77067413 | 0.5" - 2" (GAS) |



## Highland Multiclamps

The Highland Multiclamp is designed and manufactured in the USA. Made from high-quality aluminum for a balance of strength and weight saving, the Highland Multiclamp is equipped to handle 2"-16" fusion jobs at 22.5°, 45°, 67.5°, and 90° with adjustable carriages for various lengths.

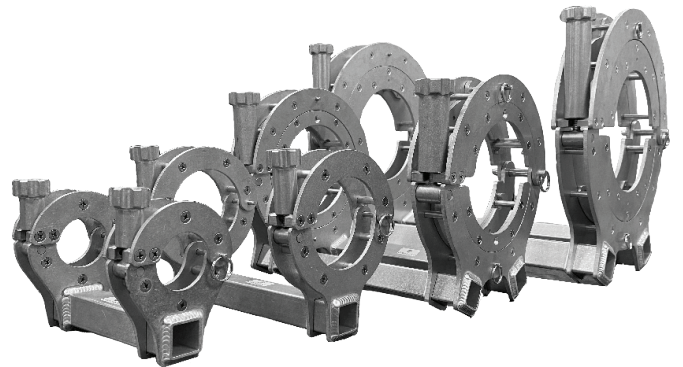
| Part No. | Description  |
|----------|--|
| 76060923 | H6432 Multiclamp 6" Clamp w/ 4" 3" & 2" Inserts                    |
| 76060920 | H1286 Multiclamp - 12" IPS Clamp w/ 8" & 6" IPS Inserts            |
| 76691612 | H16128 16" IPS Multiclamp w/ 12" & 8" IPS Inserts + 2 Ended Wrench |



## Highland Straight Clamps

The Highland line of fusion tools and accessories are designed and manufactured in the USA. Each clamp is made from high-quality aluminum for a balance of strength and weight savings.

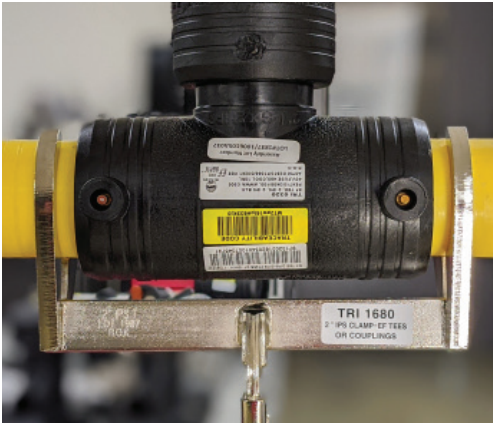
| Part No.  | Description                                 |
|-----------|---|
| 76671930  | 1" IPS EF Straight Clamp                    |
| 76671929  | 1.25" CTS Straight Clamp                    |
| 76671931  | 1.25" IPS Straight Clamp                    |
| 76670911  | 2" IPS Straight Clamp                       |
| 76670912  | 3" IPS Straight Clamp                       |
| 76670913  | 4" IPS Straight Clamp                       |
| 76670914  | 6" IPS Straight Clamp EF                    |
| 76060808  | 6" Inserts (set of 4)                       |
| 76694807* | 6" IPS Clamp with 4", 3" and 2" IPS Inserts |
| 76670915  | 8" IPS Straight Clamp                       |
| 76061212  | 8" Inserts (set of 4)                       |
| 76060919* | 8" IPS Straight Clamp w/ 6" Inserts         |
| 76060916  | 10" IPS Straight Clamp                      |
| 76060917  | 12" IPS Straight Clamp                      |
| 76060918* | 12" IPS Straight Clamp w/ 8" Inserts        |



\*With these three clamps, you have all the pipes covered, 2", 3", 4", 6", 8" and 12".

\*\*Reducing Straight Clamps can be made upon request.

## MTD



### MTD EconoClamps

MTD EconoClamps are a simple, affordable and reliable way to restrain electrofusion fittings. These clamps are designed to be quick and easy to use, operating like a pair of locking pliers. With no small, loose parts these tools are made to do the job, day in and day out for many years.

#### MTD Econoclamps for Reducers

| Part No. | Size             |
|----------|------------------|
| TRI1560  | ¾" IPS × ½" CTS  |
| TRI1565  | 1" IPS × ½" CTS  |
| TRI1572  | 1" CTS × ½" CTS  |
| TRI1575  | 1" IPS × ¾" IPS  |
| TRI1580  | 1" IPS × 1" CTS  |
| TRI1586  | 1¼" CTS × 1" IPS |
| TRI1587  | 1¼" IPS × 1" CT  |
| TRI1588  | 1¼" IPS × ¾" IPS |
| TRI1590  | 1¼" IPS × 1" IPS |
| TRI1594  | 2" IPS × 1¼" CTS |
| TRI1595  | 2" IPS × 1¼" IPS |
| TRI1605  | 4" IPS × 2" IPS  |

#### MTD Econoclamps for Couplings

| Part No. | Size    |
|----------|---------|
| TRI1500  | ½" CTS  |
| TRI1505  | ½" IPS  |
| TRI1515  | ¾" IPS  |
| TRI1520  | 1" CTS  |
| TRI1525  | 1" IPS  |
| TRI1535  | 1¼" IPS |
| TRI1536  | 1¼" CTS |
| TRI1540  | 2"      |
| TRI1545  | 3"      |
| TRI1550  | 4"      |



TRI1572



TRI1740

#### MTD Econoclamp for Tees

| Part No. | Size    |
|----------|---------|
| TRI1650  | ¾" IPS  |
| TRI1655  | ¾" CTS  |
| TRI1660  | 1" CTS  |
| TRI1675  | 1¼" IPS |
| TRI1680  | 2" IPS  |
| TRI1690  | 4" IPS  |

#### MTD Econoclamps for 45° Elbows

| Part No. | Size        |
|----------|-------------|
| TRI1700  | 2" IPS -45° |
| TRI1705  | 3" IPS 45°  |
| TRI1710  | 4" IPS -45° |

#### MTD Econoclamps for 90° Elbows

| Part No. | Size         |
|----------|--------------|
| TRI1728  | 1" CTS-90°   |
| TRI1729  | 1¼" IPS -90° |
| TRI1730  | 2" IPS -90°  |
| TRI1735  | 3" IPS-90°   |
| TRI1740  | 4" IPS -90°  |

## MTD

### MTD Bar Clamps

MTD bar clamps offer a simple, familiar solution to clamping straight fittings. Manufactured from cast aluminum, these clamps are rigid, lightweight and cannot rust. Liners are sold separately to change the size of the bar clamp, or for clamping straight reducers.



| Part No. | Size                 |
|----------|----------------------|
| TRI1754  | 4"                   |
| TRI17542 | 2" LINER FOR TRI1754 |
| TRI17543 | 3" LINER FOR TRI1754 |
| TRI1758  | 8"                   |
| TRI17586 | 6" LINER FOR TRI1758 |

### MTD Multiclamps

The MTD Multiclamp is specifically designed to cover 1-1/4" through 16", the range of pipe sizes commonly used in natural gas distribution systems. Each clamp is width adjustable and articulates to restrain straight joints, 22.5°, 45° and 90° elbows and can be lined on each side for use with reducers. Every MTD multiclamp ships in a protective storage case.



| Part No. | Size         |
|----------|--------------|
| TRI2001  | 1-1/4" - 4"  |
| TRI2018  | 4", 6", & 8" |
| TRI2020  | 6" - 16"     |



# **Electrofusion Peelers**

## MTD

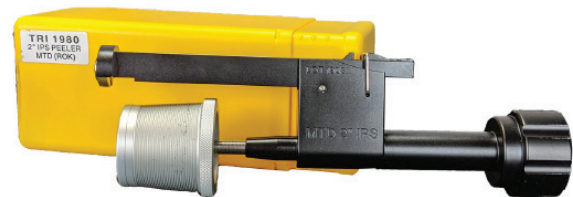
### MTD Polypeel

MTD Polypeel Outlet Peelers are designed to deliver the most consistent peel with the lowest amount of effort. They are equipped with a specially designed rotatable relief blade, with four cutting edges to ensure smooth operation and even peeling. Each ships in a protective storage sleeve.

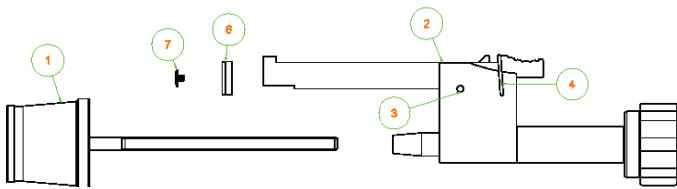
| Part No. | Description                  |
|----------|------------------------------|
| TRI1958  | ½" CTS - 2" IPS POLYPEEL     |
| TRI1960  | ½" CTS POLYPEEL              |
| TRI1963  | ½" IPS POLYPEEL              |
| TRI1965  | ¾" IPS POLYPEEL              |
| TRI1970  | 1" CTS POLYPEEL              |
| TRI1975  | 1" IPS POLYPEEL              |
| TRI1978  | 1¼" IPS POLYPEEL             |
| TRI1979  | 1¼" CTS POLYPEEL             |
| TRI1980  | 2" IPS POLYPEEL              |
| TRI1982C | 2" - 6" EXPANDABLE POLYPEEL  |
| TRI1984C | 8" - 16" EXPANDABLE POLYPEEL |



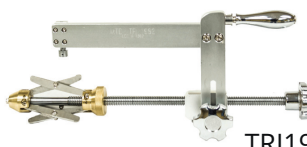
Peelers above are designed to peel a range of wall thicknesses. Peelers also available for specific wall thicknesses.



### MTD Polypeel - Replacement Parts



76000138



TRI1982C

| Item         | Part No. | Description  |
|--------------|----------|--------------|
| 1            | *Varies  | Mandrel      |
| 2            | *Varies  | Console      |
| 3            | 76000144 | Hinge Pin    |
| 4            | 76000140 | Set Clip     |
| 5 (Internal) | 76000142 | Set Spring   |
| 6            | 76000138 | Relief Blade |
| 7            | 76000139 | Blade Screw  |

\*For mandrel and console, part number is dependent on tool size. Please specify size of tool when ordering. All sizes are not listed.

## MTD Rotary Peelers

MTD Rotary Peelers are designed to perform with high consistency, even on pipe that is not perfectly round. Equipped with a floating wear-resistant carbide blade, each peeler rides on sealed ball bearings to ensure a smooth operation and even peeling. Each ships in a protective carrying case.



| Part No. | Description           |
|----------|-----------------------|
| TRI1922C | 1¼" IPS Rotary Peeler |
| TRI1924C | 2" IPS Rotary Peeler  |
| TRI1926C | 3" IPS Rotary Peeler  |
| TRI1928C | 4" IPS Rotary Peeler  |
| TRI1930C | 6" IPS Rotary Peeler  |
| TRI1932C | 8" IPS Rotary Peeler  |
| TRI1934C | 12" IPS Rotary Peeler |
| TRI1938C | 16" IPS Rotary Peeler |



## HIGHLAND

### Highland Peeler

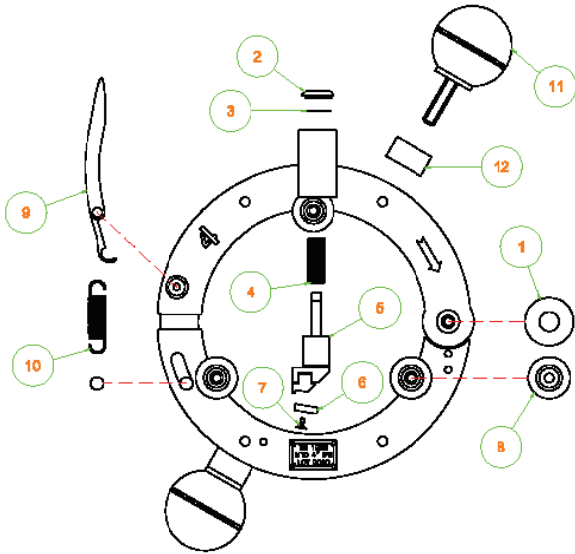
The Highland Peeler is designed for use on 2" diameter to 12" diameter DR 11 pipes. It is semi-automatic, clamping onto the wall of the pipe and rotating around while peeling a continuous ribbon 0.008" thick from the pipe's outer surface. This quick and easy to use tool ensures the optimum preparation is made to the pipe OD.



| Part No. | Description                      |
|----------|----------------------------------|
| 77067412 | 2"-12" DR 11 Pipes (4"-10" DIPS) |

## MTD

### MTD Rotary Peeler - Replacement Parts



| Item | Part No.  | Description      |
|------|-----------|------------------|
| 1    | 76000132  | Frame Bushing    |
| 2    | 76000133  | Housing Cap      |
| 3    | 76000143  | Shaft Snap Ring  |
| 4    | 76000137  | Plunger Spring   |
| 5    | 76000136  | Plunger Assembly |
| 6    | 77008511  | Blade            |
| 7    | 77008511  | Blade Screw      |
| 8    | 77008516  | Wheel Assembly   |
| 9    | 76000134* | Latch Handle     |
| 10   | 76000135* | Latch Spring     |
| 11   | NS        | Knob             |
| 12   | NS        | Knob Bushing     |

\*Indicates part number is a kit including additional items not pictured. Replacement blade and screw sold together; not stocked separately. Knobs are available, but are non-stock parts.

### Storage / Carry Cases

| Part No. | Description               |
|----------|---------------------------|
| 76000164 | Case for Single Peeler    |
| 76000165 | Case for Multiple Peelers |







## RTC 160

Essential patented (RTC series) tools for plastic pipes preparation before electrofusion. All models are composed of a mandrel device to cover all working diameters, a rotating arm with a blade, service tools and transport case.

- Working range external: Ø 2" IPS to 6" IPS
- Mandrel device to cover all working diameters
- Rotatine arm with a blade supported
- Device designed to mantain constant thickness of the continuous chip



| Working Range | Scraping Length | Max Dimensions  | Transport Case  | Weight Scraper | Weight Standard Composition |
|---------------|-----------------|-----------------|-----------------|----------------|-----------------------------|
| 2" IPS-6" IPS | 4.49"           | 14.9"x4.7"x9.8" | 15.3"x8.2"x5.3" | 5.5 lbs        | 12.4 lbs                    |

## RTC 315

Essential patented (RTC series) tools for plastic pipe preparation before electrofusion. All models are composed of a mandrel device to cover all working diameters, a rotating arm with a blade, service tools and transport case.

- Working range external: Ø 3" IPS to 12" IPS
- Mandrel device to cover all working diameters
- Rotatine arm with a blade supported
- Device designed to mantain constant thickness of the continuous chip



| Working Range  | Scraping Length | Max Dimensions  | Transport Case | Weight Scraper | Weight Standard Composition |
|----------------|-----------------|-----------------|----------------|----------------|-----------------------------|
| 3" IPS-12" IPS | 5.4"            | 20"x12.2"x16.1" | 9"x19.7"x10.6" | 9.9 lbs        | 16.5lbs                     |

# Pipe Cutting Tools



## Reed Ratchet Shears

- Ratchet Shears are ideal for cutting PE, PEX, PP and ABS pipe and tubing.
- Smoothest ratchet action for easiest cuts.
- Replace or sharpen blades for longer tool life and faster cuts.

| Catalog No. | Item Code | Capacity        | Length       | Weight      |
|-------------|-----------|-----------------|--------------|-------------|
| RS1PLT      | 04175     | 1 1/4" nom. IPS | 8.3 inches   | 0.8 pounds  |
| RS1         | 04176     | 1 1/4" nom. IPS | 8.3 inches   | 0.8 pounds  |
| RS2         | 04177     | 2" nom. IPS     | 17 inches    | 2.8 pounds  |
| RS7290      | 04182     | 2" nom. IPS     | 13.25 inches | 2.4 pounds  |
| RSP1        | 04276     | 1 1/4" nom. IPS | 8.75 inches  | 0.9 pounds  |
| RSP2        | 04277     | 2" nom. IPS     | 11.5 inches  | 1.56 pounds |

## Reed Guillotine Cutter

- Squarest cut available, within 1/8" (3 mm) on medium and high density pipe, due to strong frames and unique blade design.
- Saves facing cost: no facing needed for electrofusion, less needed for butt-fusion.
- HPC12 cuts PE up to 12" (350 mm).
- Requires minimal clearance, only 4" – 6" (102 - 152 mm) around pipe.
- Clean and safe! No chips to clog valves and apertures.
- Many high quality cuts, with durable non-stick coated tool steel blade. (resharpenable and replaceable)



| Catalog No. | Item Code | Capacity         | SDR          | Length      | Weight      |
|-------------|-----------|------------------|--------------|-------------|-------------|
| HPC4        | 04604     | 2"-4"            | SDR15.5-SDR9 | 19 inches   | 15.6 pounds |
| HPC8+       | 04609     | 3"-8" DIPS & IPS | SDR15.5-SDR9 | 29.6 inches | 27.4 pounds |
| HPC12       | 04612     | 4"-12"           | SDR17-SDR9.3 | 51 inches   | 100 pounds  |

## Reed Large Diameter Cutter 6-12"

- Safe to use as it creates no dust and chips fall where they are cut. There is no danger of chips being blown well into pipe.
- Only 6"-8" clearance needed to turn PLAS tool around pipe.
- Cuts out-of-round pipe because of spring loaded nuts.
- With PVC models, simultaneously cut and bevel PVC using cut-off blade and bevel blade.
- Inexpensive tool for contractors to make a cut for a tie-in or pipe break and then get the line back in use. Reduce overall labor costs!



| Catalog No. | Item Code | Capacity | Weight  |
|-------------|-----------|----------|---------|
| PLAS1       | 04470     | 6"-12"   | 52 lbs. |

# Service Line Tapping & Testing

## MTD

### MTD Tapping Tee Tools

MTD Tapping Tee tools were designed to be as efficient as possible. Each tool slots into the cutter with no additional tooling needed. Additionally, we offer a SafeTap version of each tool which includes an aluminum cap to keep the tool in place and eliminate any blow-by.

| Part No. | Description                                 |
|----------|---|
| TRI1774  | T-HANDLE TAPPING TEE TOOL                   |
| TRI1775  | 1/2" RATCHET DRIVE TAPPING TEE TOOL         |
| TRI1776  | SAFETAP T-HANDLE TAPPING TEE TOOL           |
| TRI1777  | SAFETAP 1/2" RATCHET DRIVE TAPPING TEE TOOL |

#### Details:

- Solid steel construction.
- Equipped with travel stops, which bottom out to indicate tap is complete.
- Laser engraved retraction lines to indicate full retraction of the cutter.
- SafeTap tools are equipped with sealing elements which prevent blow-by during operation.



### MTD High-Volume Tapping Tee Tools

MTD High-Volume Tapping Tee tools were designed to be as efficient and safe as possible. Each tool utilizes our SafeTap technology which includes a back-pressure safety adapter to keep the tool in place under line pressure. Additionally, each tool includes an integrated buttress thread PE cap for zero leak operation.

| Part No. | Description                            |
|----------|--|
| TRI1785  | 1/2" RATCHET DRIVE HV TAPPING TEE TOOL |
| TRI1786  | T-HANDLE HV TAPPING TEE TOOL           |
| TRI 1788 | 16" SAFETAP HV RATCHET TAP TEE TOOL    |

#### Details:

- Solid steel construction.
- Equipped with travel stops, which bottom out to indicate tap is complete.
- Laser engraved retraction lines to indicate full retraction of the cutter.
- PE Caps are equipped with sealing elements which prevent blow-by during operation.
- Back-pressure safety adapter threads into the top of the cutter, preventing tool movement under pressure.



## MTD

### MTD Tapping Tee Accessories

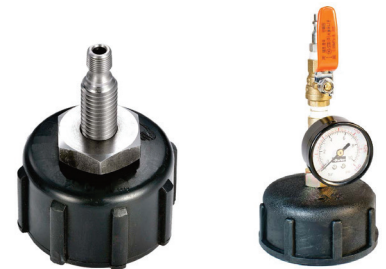
MTD offers multiple accessories to be used with our tapping tees. Our unique cap design facilitates the use of a dedicated cap wrench which puts equal forces on the cap when tightening. Additionally, various test caps are available for joint testing.

| Part No. | Description   |
|----------|---|
| TRI1783  | Standard Tapping Tee Cap Wrench   |
| TRI1793  | High-Volume Tapping Tee Cap Wrench  |
| TRI1779  | Standard Tapping Tee Test Cap with 1/4" NPT male threads (no gauge or valve)    |
| TRI1781  | Standard Tapping Tee Test Cap with 160psi gauge and valve                       |
| TRI1787  | High-Volume Tapping Tee Test Cap with 1/4" NPT male threads (no gauge or valve) |
| TRI1790  | High-Volume Tapping Tee Test Cap with 160psi gauge and valve                    |



#### Details:

- MTD cap wrenches are designed specifically to work with the MTD TriFusion tapping tees. This wrench ensures even pressure is applied when tightening and greatly reduces the stress applied to the tee.
- Test caps are available with a test gauge and valve already installed or as a raw cap to which you can connect any 1/4" NPT fitting you would like.



## M McELROY

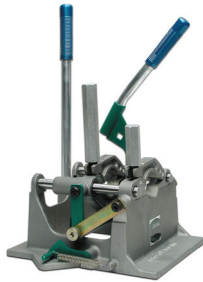
### McElroy Test Caps

- Quick and easy air pressure testing of polyethylene pipe
- Easily installed and removed for repeated use
- Test caps meet 49 CFR 192.513
- Tests pipe sizes from 1/2" CTS to 2" IPS
- Safety lanyard for added operator protection



| Part No. | Pipe Size  |
|----------|------------|
| TP-301   | 1/2" CT    |
| TP-302   | 1/2" IPS   |
| TP-303   | 3/4" CTS   |
| TP-303   | 3/4" IPS   |
| TP-305   | 1" CTS     |
| TP-306   | 1" IPS     |
| TP-307   | 1 1/4" CTS |
| TP-308   | 1 1/4" IPS |
| TP-309   | 1 1/2" IPS |
| TP-310   | 2" IPS     |

# Butt Fusion Equipment



### McElroy 2LC

Fusion capability for 1/2" CTS  
- 2" IPS and 16mm - 60mm

13 inches long

14 inches wide

15 inches tall

Weight: 23 pounds

#### Inserts - 2LC & 2CU

| Inserts    | Pipe OD         | Part No. |
|------------|-----------------|----------|
| 1 1/2" IPS | 1.90"<br>(48mm) | 207515   |
| 1 1/4" IPS | 1.66"<br>(42mm) | 207514   |
| 1 1/2" CTS | 1.63"<br>(41mm) | 207533   |
| 1 1/4" CTS | 1.38"<br>(35mm) | 207519   |
| 1" IPS     | 1.32"<br>(33mm) | 207513   |
| 1" CTS     | 1.13"<br>(29mm) | 207518   |
| 3/4" IPS   | 1.05"<br>(27mm) | 207512   |
| 3/4" CTS   | 0.88"<br>(22mm) | 207517   |
| 1/2" IPS   | 0.84"<br>(21mm) | 207521   |
| 1/2" CTS   | 0.63"<br>(16mm) | 207516   |



### McElroy Pit Bull® 14

Fusion capability for 1" IPS - 4"  
DIPS PIPE and 32mm - 110mm

15.5 inches long

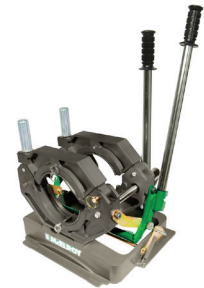
16.5 inches wide

31.8 inches tall

Weight: 35 pounds

#### Inserts - Pit Bull® 14

| Inserts  | Pipe OD          | Part No. |
|--|------------------|----------|
| 4" IPS Master                                      | 4.50"<br>(114mm) | 430701   |
| <b>All inserts below require 4" Master inserts</b> |                  |          |
| 3" IPS   | 3.50"<br>(89mm)  | 410103   |
| 2" IPS Master                                      | 2.38"<br>(60mm)  | 410007   |
| <b>All inserts below require 2" Master inserts</b> |                  |          |
| 1 1/2" IPS   | 1.90"<br>(48mm)  | 207515   |
| 1 1/4" IPS   | 1.66"<br>(42mm)  | 207514   |
| 1 1/2" CTS   | 1.63"<br>(41mm)  | 207533   |
| 1 1/4" CTS   | 1.38"<br>(35mm)  | 207519   |
| 1" IPS   | 1.32"<br>(34mm)  | 207513   |



### McElroy Pit Bull® 26

Fusion capability for 2" IPS - 6"  
DIPS PIPE and 63mm - 180mm

15.4 inches long

19.7 inches wide

30.4 inches tall

Weight: 50 pounds

#### Inserts - Pit Bull® 26

| Inserts   | Pipe OD          | Part No. |
|---|------------------|----------|
| <b>All inserts below fit in machine jaws: 6" DIPS (6.90"/175mm)</b>         |                  |          |
| 6" IPS/DIPS Master  | 6.63"<br>(168mm) | 709307   |
| <b>All inserts below require 6" IPS/180mm or 6" IPS/DIPS Master inserts</b> |                  |          |
| 4" IPS /100mm JIS   | 4.50"<br>(114mm) | 809434   |
| 3" IPS  | 3.50"<br>(89mm)  | 809323   |
| 2" IPS  | 2.38"<br>(60mm)  | 809215   |







### McElroy Pit Bull® 28

Fusion carriage, 8" IPS/DIPS Master inserts, heater, facer, and insulated heater stand. All Pit Bull carriages require 240V Hydraulic Power Unit (HPU), sold separately.

44 inches long

30 inches wide

23 inches tall

Weight: 315 pounds



### McElroy Rolling 28

Fusion capability for 2" IPS - 8" DIPS and 63mm - 225mm

65.5 inches long

38 inches wide

49.5 inches tall

Weight: 575 pounds



### Inserts - Rolling, PitBull, Dynamac & TracStar 28

| Inserts  | Pipe OD       | 4-Jaw Part Number |
|--|---------------|-------------------|
| <b>All inserts below fit in machine jaws: 8" DIPS (9.05"/230mm)</b>    |               |                   |
| 8" IPS/DIPS Master   | 8.63" (219mm) | 807203            |
| <b>All inserts below require 8" IPS/DIPS Master inserts</b>            |               |                   |
| 6" IPS Master  | 6.63" (168mm) | 801510            |
| <b>All inserts below require 6" IPS and 8" IPS/DIPS Master inserts</b> |               |                   |
| 4" IPS / 100mm JIS   | 4.50" (114mm) | 809408            |
| 3" IPS   | 3.50" (89mm)  | 809304            |
| 2" IPS   | 2.38" (60mm)  | 809204            |

## McElroy TracStar® 412

Fusion capability for 4" IPS - 12" DIPS and 110mm - 340mm



**Part No. AT 1223602**  
**High Cylinder Force**

97 inches long

53 inches wide

53 inches tall

Weight: 2,000 pounds

## McElroy Rolling 412

Fusion capability for 4" IPS - 12" DIPS and 340mm - 315mm



85 inches long

49 inches wide

46 inches tall

Weight: 1,225 pounds

## Inserts - Rolling, Pit Bull®, Dynamac® & Tracstar® 412



| Inserts   | Pipe OD        | 4-Jaw Part No. |
|---|----------------|----------------|
| <b>All inserts below fit in machine jaws: 12" DIPS (13.20"/335mm)</b>   |                |                |
| 12" IPS/DIPS Master   | 12.75" (324mm) | 1203102        |
| <b>All inserts below require 12" IPS/DIPS Master inserts</b>            |                |                |
| 10" IPS   | 10.75" (273mm) | 1207204        |
| 8" IPS  | 8.63" (219mm)  | 1207104        |
| 6" IPS Master   | 6.63" (168mm)  | 1207007        |
| <b>All inserts below require 6" IPS and 12" IPS/DIPS Master inserts</b> |                |                |
| 4" IPS / 100mm JIS  | 4.50" (114mm)  | 809408         |



## McElroy Sidewinder® Fusion Machine

Fusion capacity up to 4" (110mm) Branch Saddles, Tapping Tees & Service Saddle fittings on for all main sizes.

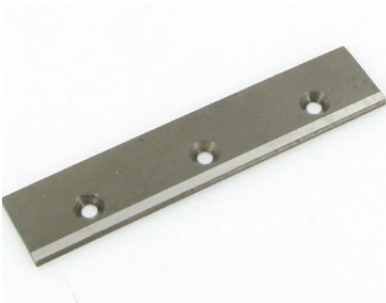


| Models   | Chain Clamp    | Compact Chain Clamp | Jaw Clamp        | Compact        |
|----------|----------------|---------------------|------------------|----------------|
| 1500 PSI | ASW00110       | ASW00120            | ASW00130         | ASW00140       |
| 1000 PSI | ASW00111       | ASW00121            | ASW00131         | ASW00141       |
| 600 PSI  | ASW00112       | ASW00122            | ASW00132         | ASW00142       |
| 300 PSI  | ASW00113       | ASW00123            | ASW00133         | ASW00143       |
| Weight   | 28 lbs (13 kg) | 27 lbs (12 kg)      | 26 lbs (11.7 kg) | 25 lbs (11 kg) |
| Length   | 12.5" (318mm)  | 12.5" (318mm)       | 7.75" (203mm)    | 7.75" (203mm)  |
| Width    | 12.5" (318mm)  | 12.5" (318mm)       | 10.5" (267mm)    | 10.5" (267mm)  |
| Height   | 26.5" (673mm)  | 21.4" (546mm)       | 28" (711mm)      | 23" (584mm)    |



### McElroy Replacement Heater Plates

| Part No. | Description                                 |
|----------|---|
| A215701  | 2" heater plate kit / Includes screws       |
| A425201  | 4" heater plate kit / Includes screws       |
| A707901  | 6" heater butt plate kit                    |
| A848706  | 8" heater plate kit / Includes screws       |
| A1242108 | 12" heater butt plate kit / includes screws |
| A3617201 | Heater butt plate kit                       |



### McElroy Replacement Facer Plates

| Part No. | Description                              |
|----------|--|
| 205702   | 2" Facer blades / 1988 & newer           |
| 204802   | 2" Facer blades / 1988 & older           |
| 413702   | 4" Facer blades / Fits all with screws   |
| 710602   | 6" Facer blade set - 6 blade set         |
| 710604   | 6" Facer blade set - 4 blade set         |
| T1208602 | 8" Facer blades / 2003 & newer           |
| 3615702  | 8" Facer blades / 2003 & older           |
| 846702   | 8" Facer blades / Pitbull / 2004 & older |
| 3615703  | 12" Facer blades / 1997 & older          |
| 3615714  | 12" Facer blades / 1997 thru Oct 2003    |
| T1208603 | 12" Facer blades / Oct 2003 & up         |
| T1208610 | Facer Blades, 6.12"L                     |



### McElroy DataLogger® 7

Part No. DLP0857716

- Record and document key parameters of the fusion process
- Upload data from the field via wireless network to the DataLogger Vault™
- Intuitive user interface with large touch screen buttons
- Tablet powered by Andriod features integrated camera, bar code scanner and GPS
- Multi-language support.



### McElroy Pipe Support Stands

Height is adjustable to properly support, position and align pipe to be fused.

Maximum Load: 4"-20": 2,750 lbs.

Maximum Load: 8"-36": 4,500 lbs.



### McElroy Low Profile Rollers

- 4" IPS - 20" OD (110mm - 500mm)
- 40 per case - Supports approx. 1,000' (304m) of pipe.



### McElroy Pyrometer

Part No. A218804

Used for checking surface temperatures of heaters. Contact or laser-guided models available.

# Squeeze-Off Tools

## Footage



### Footage C50 Manual

The C50 features a swing-out/lock-in bottom bar design, with oversqueeze protection provided by 4-sided, positive locking, indexable gauge plates. Aircraft grade aluminum squeeze bars, plated steel side shafts and a heat treated feed screw combine durability and function for years of trouble-free use. The C50 comes complete with our standard 5' grounding spike to ensure safety during the squeeze process.

| Part No. | Range                  | Height | Width | Weight  |
|----------|------------------------|--------|-------|---------|
| C50-A2   | 1/2" CTS to 1-1/4" IPS | 8.5"   | 8"    | 4.5 lbs |



### Footage C100 Manual

The C100 features 6-sided, positive locking indexable gauge plates, aircraft grade aluminum squeeze bars, chrome plated steel side shafts and a coated feed screw, reducing corrosion and friction.

This tool can be operated with the detachable torque bar or with a ratchet on the integral hex at the top of the feed screw. The unique swing-out/lock-in bottom bar design allows for quick and easy access to the pipe even in confined spaces, and the detachable stabilizing bar provides added stability during the squeeze process.

| Part No.  | Range              | Height | Width | Weight  |
|-----------|--------------------|--------|-------|---------|
| C100-B001 | 1/2" CTS to 2" IPS | 12"    | 6.5"  | 9.5 lbs |



### Footage C132

The Model C132 Squeeze Off Tool is designed to squeeze 1/2" to 3/4" PE pipe. The C132 features a positive clamp style, with fixed gap squeeze settings to ensure that the gas line is completely closed off without damage. It's lightweight, compact size and many uses makes this tool a great addition to service line work. The C132 also includes a static electricity grounding spike to ensure safety during the squeeze process.

| Part No.  | Range        | Height | Width | Weight  |
|-----------|--------------|--------|-------|---------|
| C100-B001 | 1/2" to 3/4" | 2.5"   | 10"   | 1.5 lbs |



### Footage C156 Manual

Similar to the C100, the C156 features 6-sided, positive locking indexable gauge plates, aircraft grade aluminum squeeze bars, chrome plated steel side shafts and a coated feed screw, reducing corrosion and friction.

This tool can be operated with the detachable torque bar or with a ratchet on the integral hex at the top of the feed screw. The unique swing-out / lock-in bottom bar design allows for quick and easy access to the pipe even in confined spaces, and the detachable stabilizing bar provides added stability during the squeeze process.

| Part No.  | Range            | Height | Width | Weight |
|-----------|------------------|--------|-------|--------|
| C156-A004 | 1" IPS to 4" IPS | 19.5"  | 10.5" | 27 lbs |



## Footage C200 Manual Remote

This tool is constructed almost entirely of aircraft grade aluminum alloys, allowing for a lightweight, strong and versatile tool. The jaws flat bars with radiused edges provide center springs on either side of the jaws to ensure the pipe is properly aligned every time.

The C200 incorporates a collapsible fixed handle and a detachable rotating handle for ease of storage. The tool also features a rotating gauge plate, 5/8" hex drive for use in confined spaces, and a convenient carrying handle located at the balance point.

| Part No. | Range                | Height | Width | Weight |
|----------|----------------------|--------|-------|--------|
| C200-A2  | 1/2"CTS to 1-1/4"IPS | 5'     | N/A   | 28 lbs |



## Footage C400 Manual Gear Operated

The C400 incorporates all the features of the manual models, plus a unique worm gear drive, providing superior power delivery for larger diameter pipes. This tool features 6-sided, positive locking, indexable gauge plates, aircraft grade aluminum squeeze bars, chrome plated steel side shafts and a coated feed screw, reducing corrosion and friction.

The unique swing-out/lock-in bottom bar design allows for quick and easy access to the pipe even in confined spaces, and the stabilizing bar provides added stability during the squeeze process.

| Part No. | Range            | Height | Width | Weight |
|----------|------------------|--------|-------|--------|
| C400-A3  | 2" IPS to 6" IPS | 20"    | 13.5" | 50 lbs |

## Footage C177 Hydraulic

The C177 features 6-sided, positive locking, indexable gauge plates, aircraft grade aluminum squeeze bars, and an easy access hydraulic connector for when the tool is in the pit.

The unique lock-in / swing-out bottom bar design allows for quick and easy access to the pipe, even in confined spaces, and the lock down bolts ensure that a squeeze is maintained even if the hydraulics are disconnected.

| Part No. | Range            | Height | Width | Weight |
|----------|------------------|--------|-------|--------|
| C177-A2  | 1" IPS to 4" IPS | 19.5"  | 10.5" | 42 lbs |

*\*requires pump C148-28*

## C148-28 Squeeze Off Pump

Lightweight single stage hydraulic hand pump c/w pressure gauge and 8' hose.





## Footage

### Footage C600 Hydraulic

The C600 features 8-sided, positive locking, indexable gauge plates, a centering plate to ensure proper alignment, and upward pointing hydraulic connectors for easy access when the tool is in the pit.

Moveable carrying handles turn inward to decrease tool width for easy storage and working in con fined spaces. Locking pins allow the handles to be secured in the inward or outward position using dual plunger pins.

| Part No.   | Range            | Height | Width | Weight |
|------------|------------------|--------|-------|--------|
| C6990-A002 | 2" IPS to 6" IPS | 29"    | 19"   | 75 lbs |

*\*requires pump C148-355*



### Footage C850 Hydraulic

The C850 features 8-sided, positive locking, indexable gauge plates, a centering plate to ensure proper alignment, and upward pointing hydraulic connectors for easy access when the tool is in the pit.

Moveable carrying handles turn inward to decrease tool width for easy storage and working in confined spaces. Locking pins allow the handles to be secured in the inward or outward position using dual plunger pins.

| Part No. | Range            | Height    | Width       | Weight  |
|----------|------------------|-----------|-------------|---------|
| C850-A1  | 4" IPS to 8" IPS | 27" / 40" | 22" / 26.5" | 123 lbs |

*\*requires pump C148-355*

*Custom gauge plates are available upon request.*



### C148-355 Squeeze Off Pump

Pump kit with controlled release valve, pressure gauge, and 8' hoses.



## Footage C1200 Hydraulic

The model C1200 Hydraulic Squeeze Off Tool is designed to squeeze 8" to 12" MDPE and HDPE pipe safely and effectively.

The C1200 features 8-sided, positive locking, indexable gauge plates, aircraft grade aluminum squeeze bars, chrome plated steel side shafts and a 10,000 PSI hydraulic system with quick connect fittings. This CNC machined tool contains no welded parts and exerts 150 tons of squeezing force.

| Part No. | Range             | Height | Width | Weight  |
|----------|-------------------|--------|-------|---------|
| C1200    | 8" IPS to 12" IPS | 37-51" | 34"   | 525 lbs |

*\*requires pump C1200-25*

## C1200-25 Squeeze Off Pump

Air/Hydraulic pump kit, foot operated c/w controlled release valve, pressure gauge and 20' hoses.



The model C1600 Hydraulic Squeeze Off Tool is designed to squeeze 12" to 16" MDPE and HDPE pipe safely and effectively.

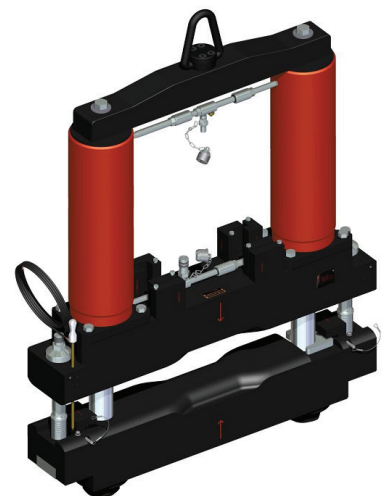
The C1600 features block stops for a variety of pipe sizes and SDR's, aircraft grade aluminum squeeze bars, chrome plated steel side shafts and a 10,000 PSI hydraulic system with quick connect fittings. This CNC machined tool contains no welded parts and exerts 261 tons of squeezing force.

| Part No. | Range              | Height | Width | Weight   |
|----------|--------------------|--------|-------|----------|
| C1600    | 12" IPS to 16" IPS | 51.5"  | 70"   | 1300 lbs |

*\*requires pump C812S-AK1*

## C812S-AK1 Squeeze Off Pump

Air/Hydraulic pump kit, lever operated c/w filter/lubricator.



## Footage



### Footage C165 Steel Hydraulic

Our new C165 Emergency Steel Squeeze Off Tool is designed to control steel anodeless riser breaks remotely, keeping the operator a safe distance from the damage point. When an emergency arises the C165 will help control gas leaks effectively, efficiently and safely. Safety is the primary goal of the C165.

Features include a three-position head that will pivot to 45° and 90°, telescopic handle that can extend from 7' to 14' keeping the operator a safe distance from the gas line break.

| Part No.     | Range              | Height | Width | Weight |
|--------------|--------------------|--------|-------|--------|
| C165-AK2-KIT | 3/4" IPS to 2" IPS | 18"    | 7"    | 45 lbs |



### Footage C170 Steel Hydraulic

The model C170 Steel Squeeze Off Tool is designed to squeeze 1/2" to 2" pipe. The C170 Bottom swing out bar allows for easy installation on the pipe. Safety locking collar secures bars together once squeeze is complete. Bar profile with built in stops to prevent pipe cutting.

Single stage hydraulic hand pump provides 10,000 PSI in a lightweight and compact design.

| Part No. | Range            | Height | Width | Weight |
|----------|------------------|--------|-------|--------|
| C170-A2  | 1/2"IPS to 2"IPS | 22"    | 7"    | 47 lbs |

*\*requires pump C148-28*

### C148-28 Squeeze Off Pump

Air/Hydraulic pump kit, foot operated c/w controlled release valve, pressure gauge and 20' hoses.



### C148-165EG Squeeze Off Pump

Lightweight single stage hydraulic hand pump c/w pressure gauge lock out needle valve and 15' hose.



## Footage



### Footage C36S Steel Hydraulic

The model C36S Steel Squeeze Off Tool is designed to squeeze 3" to 6" pipe. The C36S features a Bottom swing out bars with positive safety latch. Dual-acting hydraulic cylinders for the more compact profile. Safety lock-down bolts to secure bars once squeeze is complete. Jaw profile will not cut or shear steel pipe.

Air over hydraulic pump kit. c/w Needle Valve, Pressure Gauge, Filter Regulator Lubricator and 20' Hoses.

| Part No. | Range          | Height | Width | Weight  |
|----------|----------------|--------|-------|---------|
| C36S-A1  | 3"IPS to 6"IPS | 31"    | 23"   | 260 lbs |

*\*requires pump C1200-25*

### C1200-25 Squeeze Off Pump

Air/Hydraulic pump kit, foot operated c/w controlled release valve, pressure gauge and 20' hoses.



### Footage C812S Steel Hydraulic

The model C812S Steel Squeeze Off Tool is designed to squeeze 8" to 12" pipe. The C812S features a Bottom swing out bars with positive safety latch. Dual-acting hydraulic cylinders for the more compact profile. Safety lock-down bolts to secure bars once squeeze is complete. Jaw profile will not cut or shear steel pipe.

Air over hydraulic pump kit. c/w Needle Valve, Pressure Gauge, Filter Regulator Lubricator and 20' Hoses.



| Part No. | Range           | Height | Width | Weight  |
|----------|-----------------|--------|-------|---------|
| C812S-A1 | 8"IPS to 12"IPS | 43"    | 36"   | 920 lbs |

*\*requires pump C812S-AK1*

### C812S-AK1 Squeeze Off Pump

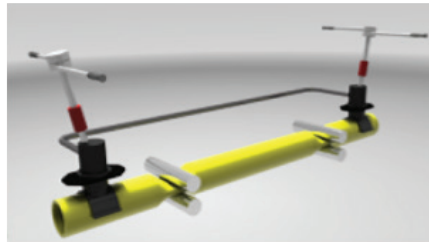
Air/Hydraulic pump kit, lever operated c/w filter/lubricator.



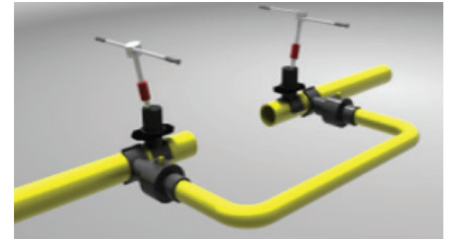
# Line Stopping

## MTD

The MTD Line Stopping System boasts extremely light weight for equipment of it's type, thanks in part to materials like Aluminum, Titanium and Stainless Steel. The entire assembled system on a 12" stop weighs less than 200 lbs.



Permanent repair with electrofusion fittings following an emergency squeeze-off.



Double-stop and abandonment after installing permanent bypass with POLYTAPP valves

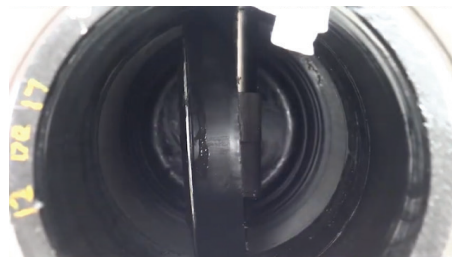
Typically, line stopping is used for main relocations and permanent repair of sections of main that have been squeezed because of an emergency.

**COMING SOON**  
2" thru 4" Line Stopping for Steel Pipe

### How it works:



Folded plugging head is inserted into pipe vertically, through a hot-tapped hole.

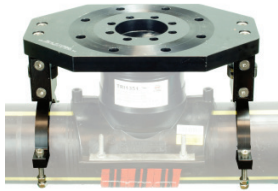


Folded plugging head is unfolded, in line with flow of gas.

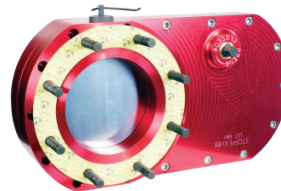


Opened plugging head is turned perpendicular to the main, like a butterfly valve, and the flow of product is stopped.

## MTD



Valve-to-fitting adapters include support arms which transfer stress away from the fitting and help re-round.



Aluminum valves include an internal bypass for equalizing pressure across valve prior to operating under pressure.



Universal line stopping fittings are manufactured by MTD, with integrated under-clamps. All MTD fittings are F2897 compliant and fuse at 40V through 4.7mm terminal pins.



Plugging machine housings include a 1/4" port for purge and a 2" port for temporary bypass between plugging machines.

### MTD Line Stopping Kits

Line stopping machines are sold in kits. Everything needed to perform a single-position stop contained in a custom-fit rotomolded storage / transport case. All system parts are available individually. Consult your sales rep for more information.

| Part No.       | Description                     |
|----------------|---------------------------------|
| STOPPE0304-SPK | 3X4 Complete Line Stopping Kit  |
| STOPPE0406-SPK | 4X6 Complete Line Stopping Kit  |
| STOPPE0608-SPK | 6X8 Complete Line Stopping Kit  |
| STOPPE0812-SPK | 8X12 Complete Line Stopping Kit |

### MTD Line Stopping Fittings

Line stopping fittings are a specialized version of a branch saddle, with either a threaded outlet or 'Type II' flanged outlet. Each fitting includes a completion plug with O-ring and a body cap for final sealing prior to burial. All fittings are PE4710, DR11 rated, universal self-restraining electrofusion.

| Part No. | Description               |
|----------|---------------------------|
| TRI1339  | 3X4 EF Line Stop Fitting  |
| TRI1351  | 4X6 EF Line Stop Fitting  |
| TRI1361  | 6X8 EF Line Stop Fitting  |
| TRI1382  | 8X12 EF Line Stop Fitting |

# Hot Tapping



## MTD

### MTD Tapping Machines

The POLYTAPP system from MTD is an easy-to-use solution for hot tapping live gas and water mains. Each tapping machine is light weight and simple to operate. The patented POLYTAPP HDPE ball valve further simplifies the process.



POLYTAPP hot tap valves and saddles are available in 2", 4", 6", and 8" for size-on-size taps. Other saddles are also available for reduced-branch hot taps.



Accessory kits include an exclusive cutter and pilot design that retains shavings behind the coupon as well a tapping adapter, test cap and wrench.



Optional pneumatic drive and reduction gearbox are available for effortless operation.



| Machine | Travel | Weight | Part No.   |
|---------|--------|--------|------------|
| PE25    | 25"    | 3.22   | TRI1082    |
| PE37    | 37"    | 5.56   | TRI1082-37 |

| Valve      | Part No. |
|------------|----------|
| 2" Nominal | TRI1090  |
| 4" Nominal | TRI1100  |
| 6" Nominal | TRI1110  |
| 8" Nominal | TRI1120  |

| Valve Clamp | Part No.  |
|-------------|-----------|
| 2" Nominal  | TRI11300  |
| 4" Nominal  | TRI113004 |
| 6" Nominal  | TRI113006 |
| 8" Nominal  | TRI113008 |

| Accessory Kit | Part No. |
|---------------|----------|
| 2"            | TRI1099  |
| 4"            | TRI1109  |
| 6"            | TRI1119  |
| 8"            | TRI1129  |

| Nominal Size | Diameter |
|--------------|----------|
| 2"           | 1.50"    |
| 4"           | 3.35"    |
| 6"           | 4.72"    |
| 8"           | 5.88"    |

## MTD

### Optional Accessories for PE Taps

The available reduction gearbox and pneumatic motor make the process of hot tapping a PE pipe semi-automated, reducing operator fatigue and making the already fast process even faster.

| Part No.       | Description                      |
|----------------|----------------------------------|
| TRI1084        | Reduction Gearbox for PE25/32/37 |
| ST30-6000-0000 | Angle-drive reversible air motor |




### Hot Tap Tools

- The most precise and economical way to tap through 2", 3", 4", or 6" branch saddles. This tool can be used with the 2LC, 2CU, Pit Bull® 14, or the 28CU fusion machines in combination with the Sidewinder™.
- Metric Hot Tap available in 63, 90, 110, 125, and 160mm.

| Pipe Size | Medium Density<br>(2406/2708) | High Density<br>(3408/4710) |
|-----------|-------------------------------|-----------------------------|
| 2" IPS    | 220002                        | 220003                      |
| 3" IPS    | 220106                        | 220107                      |
| 4" IPS    | 220206                        | 220207                      |
| 6" IPS    | 220302                        | 220303                      |



# **Sweetwater Trailers**



## Sweetwater Model CT2710C-LT-SL

Combo trailer with McElroy 3"-6" LineTamer™, self-loading option

| Width | Length | Height | Max Weight | Capacity   | Empty Weight |
|-------|--------|--------|------------|------------|--------------|
| 8'    | 27'    | 10'    | 10,000 lbs | 3,300 lbs. | 6,300 lbs.   |

### COIL SIZES:

Max. Outside Dia: 125"

Min. Inside Dia: 46"

Max. Width: 66"

## Sweetwater Model CT1143TT

Lazy Susan Coil Trailer with Hydraulic Turntable Brake & McElroy 2" LineTamer™

| Width | Length | Height | Max Weight | Capacity   | Empty Weight |
|-------|--------|--------|------------|------------|--------------|
| 8'    | 12' 5" | 7' 4"  | 4,300 lbs  | 2,460 lbs. | 1,840 lbs.   |

### COIL SIZES:

Max. Outside Dia: 96"

Min. Inside Dia: 43 ½"

Max. Width: 50"



## Sweetwater Model CT2786C-LT

Combo trailer with McElroy 3"-6" LineTamer™, non self loading

| Width | Length | Height | Max Weight | Capacity   | Empty Weight |
|-------|--------|--------|------------|------------|--------------|
| 8'    | 27'    | 8' 4"  | 8,600 lbs  | 3,300 lbs. | 5,300 lbs.   |

### COIL SIZES:

Max. Outside Dia: 125"

Min. Inside Dia: 46"

Max. Width: 66"

## Sweetwater Model CT1135TT

Lazy Susan Coil Trailer with  
Optional Turntable Brake

| Width | Length | Height | Max Weight | Capacity   | Empty Weight |
|-------|--------|--------|------------|------------|--------------|
| 88"   | 13"    | 7' 4"  | 3,500 lbs  | 1,200 lbs. | 800 lbs.     |

|                    |                       |
|--------------------|-----------------------|
| <b>COIL SIZES:</b> | Max. Outside Dia: 80" |
|                    | Min. Inside Dia: 45"  |
|                    | Max. Width: 50"       |



## Sweetwater Model ST4096

Stick Pipe Trailer

| Width | Length | Height | Max Weight | Capacity   | Empty Weight |
|-------|--------|--------|------------|------------|--------------|
| 8' 5" | 46' 6" | 7' 4"  | 14,000 lbs | 9,340 lbs. | 4,650 lbs.   |

- 16" White Mod wheels
- Drop Foot Jack: 700 lbs
- Hauls 40' or less pipe
- 4 Racket straps
- 3520# at 80 psi
- 3750# at 80 psi
- Tires - ST235/80R16 LRE

## Sweetwater Model CT1986

Coil hauler

| Width | Length | Height | Max Weight | Capacity   | Empty Weight |
|-------|--------|--------|------------|------------|--------------|
| 96"   | 19"    | 8' 4"  | 8,600 lbs  | 3,800 lbs. | 4,800 lbs.   |

Eliminates the need for pipe laying equipment to leave the jobsite to reload. Needs only one man to transport coiled pipe, includes permanent winches and straps to secure coil while in transit. Easily transports 10' or 8' coils.





## About ISCO Industries

Since 1962, ISCO Industries, a global total piping solutions provider headquartered in Louisville, Ky., has stocked and sold a wide variety of HDPE pipe and piping materials. ISCO offers custom piping fabrication to provide solutions for multiple applications such as: industrial, municipal, power, marine, nuclear, oil and gas, mining, waterworks, environmental, geothermal, golf, culvert-lining and landfill. The company also rents, services and sells McElroy fusion equipment. ISCO has more than 35 locations in North America – inventorying large stockpiles of HDPE pipe and piping products.

In 2019, ISCO acquired MT Deason known for providing customers with innovative and safe products for the gas distribution industry. For more information on ISCO, visit [www.isco-pipe.com](http://www.isco-pipe.com) or call 1-800-345-ISCO.





**ISCO Industries**

100 Witherspoon Street | Louisville, KY 40202  
[www.isco-pipe.com](http://www.isco-pipe.com) • 800-345-4726