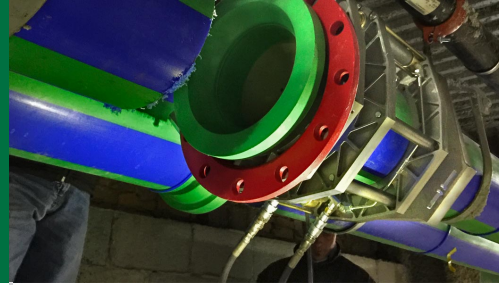


ACROBAT™ 250

63MM - 250MM (2" - 10")



MADE FOR
MECHANICAL
HVAC
PLUMBING



STANDARD FEATURES

- ✓ Compact and lightweight for easy maneuvering in tight spaces
- ✓ Configures from 4 to 3 jaws without tools
- ✓ Single insert design
- ✓ Removable upper jaws
- ✓ Ergonomic heater handlebar design
- ✓ Lightweight heater construction
- ✓ DataLogger® compatible
- ✓ Low-power consumption
- ✓ Open-frame HPU design offers easy access for maintenance
- ✓ Adjustable stripper bars for flexibility in fusing fittings
- ✓ Premium shipping container serves as work surface



The Acrobat™ 250 has a compact design for easy maneuvering in tight work spaces and is capable of fusing pipe on the ground, vertically and overhead. To further reduce its footprint, the carriage can be configured from 4 to 3 jaws without tools. A single-size insert design can accommodate a variety of pipe sizes, and its narrow jaws allow fusions to most flanges and fittings.

The Acrobat™ 250 comes with a new lightweight heater and guide rod latching system which eliminates the need to hold the heater in place during overhead fusions. Its ergonomic handlebar design makes it easy to use in different orientations, including overhead. The Acrobat is compatible with two hydraulic power units (HPUs) designed to meet the maximum system pressure desired on your jobsite. Two carriage pressure configurations are available: low force, for fusing in low-drag situations or with thinner-walled pipe; and high-force, for fusing in high drag and vertical applications. Both allow the operator to present the facing, heating and fusing pressures.

SEE SECOND PAGE FOR DETAILED SPECIFICATIONS

Copyright © 2022 McElroy Manufacturing, Inc. The contents of this specification page are for informational use only and subject to change without notice. All trademarks are property of McElroy Manufacturing, Inc. unless otherwise noted. All Rights Reserved. 10/05/2022



DataLogger
COMPATIBLE

McELROY

ACROBAT™ 250

63MM - 250MM (2" - 10")

SPECIFICATIONS

MODELS		POWER		CARRIAGE DIMENSIONS	
A2500101	Low Force, 120V	100-120V Heater	100-120V, 1,750 Watts, 50 / 60 Hz, 1 Ph	Length	3-Jaw - 21.1" (535.9mm) 4-Jaw - 30.1" (764.5mm)
A2500102	Low Force, 240V	220-240V Heater	220-240V, 3,000 Watts, 50 / 60 Hz, 1 Ph	Width	3-Jaw - 18" (457.2mm) 4-Jaw - 18.2" (463.5mm)
WEIGHTS		Facer Facer	1.6 HP, 100-120V, 50 / 60 Hz, 1 Ph, 10 Amps	Height	3-Jaw - 14.8" (374.6mm) 4-Jaw - 17" (431.8mm)
Carriage	3-Jaw - 38.1 lbs. (17.3 Kg) 4-Jaw - 53.6 lbs. (24.3 Kg)	Facer Facer	1.6 HP, 220-240V, 50 / 60 Hz, 1 Ph, 5 Amps	SHIPPING DIMENSIONS	
Heater	20 lbs. (9.1 Kg)	220-240V Heater Plug type	CEE 7/7 (DIN 49441)	Length	46" (1,168.4 mm)
Facer	39.8 lbs. (18.1 Kg)	100-120V Heater Plug type	NEMA 5-15P	Width	50" (1,270 mm)
Shipping Weight	385 lbs. (174.6 Kg)	Facer Facer Plug type	CEE 7/7 (DIN 49441)	Height	32" (812.8 mm)
		Facer Facer Plug type	NEMA 5-15P	INCLUDES	
				Fusion machine, facer, heater, insulated heater stand, facer stand, HPU (Hydraulic Power Unit) , 200mm and 160mm inserts, and shipping container.	
MACHINE DIMENSIONS					
Machine Length		30.1" (764.5mm)			
Machine Width		18.2" (463.5mm)			
Machine Height		17" (431.8mm)			