

MTD ROTARY PEELER

Operator's Manual



www.isco-pipe.com | 800-345-4726

NOTICE

Any operation involving work on pipe containing liquids or gases under pressure is potentially hazardous. To ensure a safe working environment, always follow proper procedures including those available from the equipment manufacturer and your company.

No person is authorized to make plastic pipe joints for natural gas service unless that person has been qualified through training, assembling, fusing and testing specimens in accordance with 49 CFR 192.285.

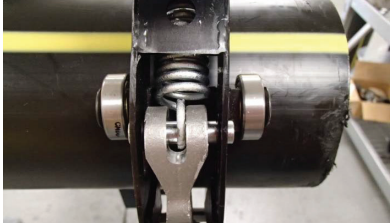
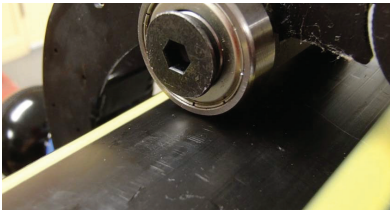
It is the responsibility of the operator to establish a method to determine that each person making joints in pipelines in their system is qualified to make those joints.

This manual does not serve to replace but should be used as a supplement to hands-on training. This manual is not intended to be used for system design purposes and does not take the place of the advice of a professional engineer.

Should any issue or difficulty arise while operating this equipment, contact ISCO Industries, Inc.



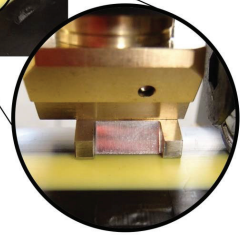
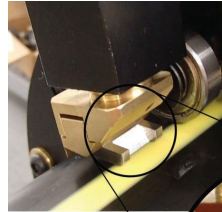
OPERATING INSTRUCTIONS

1. Determine which direction the peeler needs to travel. The peeler blade will always trail behind the wheels. Situate the peeler on the pipe with the blade housing facing opposite of the direction you intend the peeler to travel.
2. Unlatch and open the peeler. Place peeler around pipe, connect latch hook to shaft on opposite side, and depress latch handle to tighten peeler onto pipe.
3. Make sure all bearings are in contact with pipe surface before continuing. If they are not, pipe may be out of round.
4. Make sure the entire width of the blade is in contact with pipe surface. If it is not, it will skip sections of the pipe and will not peel as intended.
5. Rotate the peeler in the direction of the arrow on the peeler body. Continue to rotate until pipe section is adequately peeled.

OPERATING INSTRUCTIONS



Blade is extremely sharp and can cause injury if mishandled. Latch mechanism is a pinch point. Keep fingers clear of area between latch and peeler frame.



Always store the peeler in it's case to prevent damage to the floating blade mechanism. If this mechanism is damaged or excessively dirty, the tool may not be able to peel as intended.

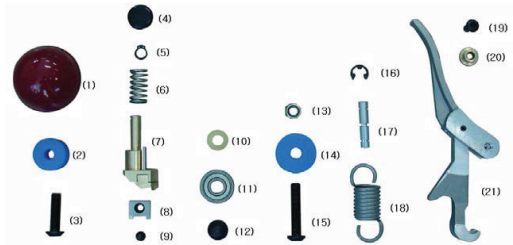
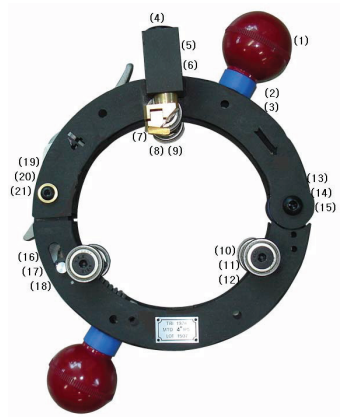


Due to the design of the tool, when peeling from the end of the pipe there will be approximately 0.25" of non-peeled pipe surface at the edge of the pipe. This should be cut off after peeling, and before alcohol cleaning.

PARTS & MAINTENANCE

Routine maintenance is not prescribed or required for this tool. However, regular checks to ensure it is kept clean and is functioning properly are recommended. Check intervals will vary with tool use, and are not prescribed in this manual.

1. Check that bearing wheels spin freely and are not frozen or seized.
2. Check that shaft of blade plunger (7) is clean and moves freely up and down.
3. Check that head of blade plunger (7) articulates freely.
4. Measure peel thickness with a micrometer and check that is between 0.007" and 0.010".



5. Check that plastic is not built up on leading edges of blade, and that blade is not chipped or dull.

Part Number	Description	Consists Of
TR1936-10	Knob Kit	Figures # 1, 2, 3
TR1936-20	Blade Kit	Figures # 4, 5, 6, 7, 8, 9
TR1936-30	Wheel Assy. Kit	Figures # 10, 11, 12
TR1936-40	Body Frame Bushing	Figures # 13, 14, 15
TR1936-50	Spring Kit	Figures # 16, 17, 18
TR1936-60	Latch Assy. Kit	Figures # 19, 20, 21

BLADE REPLACEMENT

This tool will periodically require a new blade. Follow these steps to remove and replace the blade. Blade replacement requires a

1. Locate the allen-head screw holdint the blade to the blade plunger assembly.
2. Remove the screw by rotating counter-clockwise.
3. Remove the blade.
4. Position the new blade in the same orientation as the old blade.
5. Replace and tighten the allen-head screw.

PART NUMBERS

Part Number	Description
LCI00838	1-1/4" IPS MTD ROTARY PEELER W/ CASE
LCI00840	2" IPS MTD ROTARY PEELER W/ CASE
LCI00845	3" IPS MTD ROTARY PEELER W/ CASE
LCI00847	4" IPS MTD ROTARY PEELER W/ CASE
LCI00850	6" IPS MTD ROTARY PEELER W/ CASE
LCI00852	8" IPS MTD ROTARY PEELER W/ CASE
LCI00854	12" IPS MTD ROTARY PEELER W/ CASE
LCI00856	16" IPS MTD ROTARY PEELER W/ CASE
77008511	REPLACEMENT BLADE; ALL SIZES
76000163	REPLACEMENT CASE FOR 1-1/4" THRU 4" PEELERS
76000085	REPLACEMENT CASE FOR 6" PEELER
76000238	REPLACEMENT CASE FOR 8" PEELER
76000239	REPLACEMENT CASE FOR 12" & 16" PEELERS



www.isco-pipe.com | 800-345-4726

© Copyright 2022, All Rights Reserved, ISCO Industries, Inc.